


Sophie Jolivet

CÉRAMIQUE CONTEMPORAINE

PRESS KIT



contacts - 06 18 36 35 76 - contact@sophiejolivet-art.com

Qualité Artisan d'art céramiste



Artisan d'art

Occitanie

Biography

My ceramics reflect who I am: contrasted. Raw yet delicately crafted, they embody a singular journey shaped by artistic exploration, technical rigor, and aesthetic research.

Born in 1975 in Isère, my childhood was nourished by literature, nature, and intense sensations. From adolescence onward, I immersed myself in visual arts: pastels, inks, printmaking, collage, photography... everything captivated me. I participated in creating self-published zines. I exhibited and sold my first works in the late 1990s, illustrated texts for poets and authors.

In 2000, I settled in the Pyrénées-Orientales. My passion for visual arts led me into an unexpected realm: cardboard packaging. Self-taught, I developed expertise in volume design and technical innovation in packaging.

For twenty years, this unconventional path in the industrial sector provided me with mastery of volume, innovation, and technical gesture that now nourishes my artistic practice.



Summer 2021 marked a turning point. During a residency for a Land Art performance, I discovered working with clay: hand-building, wheel-throwing, smoke-firing.

The encounter with clay as a material reconciled all my aspirations: artistic and technical approach, contact with matter, volume creation, the importance of gesture.

I trained in wheel-throwing and ceramic studio management, and in 2022 founded my own studio in Maureillas-las-Illas

Artistic approach

Through her work, Sophie Jolivet seeks to explore the tensions between structure and spontaneity, between rigorous craftsmanship and free organic forms.

Each collection develops in a specific direction: technical constraint, creative freedom, intimate archaeology... While aiming for a balance of these forces resulting in an aesthetic that plays on contrast.

Her universe blends human figures, symbolic objects, and organic forms, at the crossroads of mineral and living matter, between austerity and ornamentation.

The collections question traces, bodies, layers, and buried narratives:

Corail: modeled and pinched forms, with colored fins and swollen bellies

Strates: a postmodern approach to coiling that plays with texture and light

Mythes: sculptures, figures and objects, archetypes in smoked stoneware

Bleus: blue bodies shaped by the clay's constraints

Sweet Smokes: contemporary raku on simple thrown or pinched forms



Collection Corail

Collection Corail

*Corail, noun (masculine)
— Marine animal forming calcareous colonies; its fossilized structures create organic, complex forms, between plant and mineral.*



This series explores forms between seeds, corals, and organic gears. The colors in this collection are achieved through layered washes of decanted clay slips. Raku firing and final smoke-firing reveal the crackle network in the glossy areas while the raw clay body takes on blacks and grays.

a - CORAIL-V4 - detail
Smoked stoneware, handmade fine slips, oxides, transparent glaze.
H. 35.5 cm - max diam. 40 cm - weight 8.7 kg.

b - CORAIL-CPL1
Smoked stoneware, handmade fine slips, transparent glaze.
H. 8.5 cm - max diam. 22 cm - foot diam. 9 cm - weight 0.5 kg.

c - CORAIL-CPL2
Smoked stoneware, handmade fine slips, transparent glaze.
H. 11 cm - max diam. 20 cm - foot diam. 8 cm - weight 0.7 kg.

d - CORAIL-V12
Smoked stoneware, handmade fine slips, transparent glaze.
H. 20 cm - max diam. 27 cm - weight 2.6 kg.

e - CORAIL-V13
Smoked stoneware, handmade fine slips.
H. 28 cm - max diam. 26 cm - foot diam. 8,5 cm - weight 2.4 kg.



Collection *Strates*

Collection *Strates*

Strate, noun (feminine)

— *Distinct sedimentary layer.*

— *Each of the constituent levels of a whole, whether geological or symbolic.*



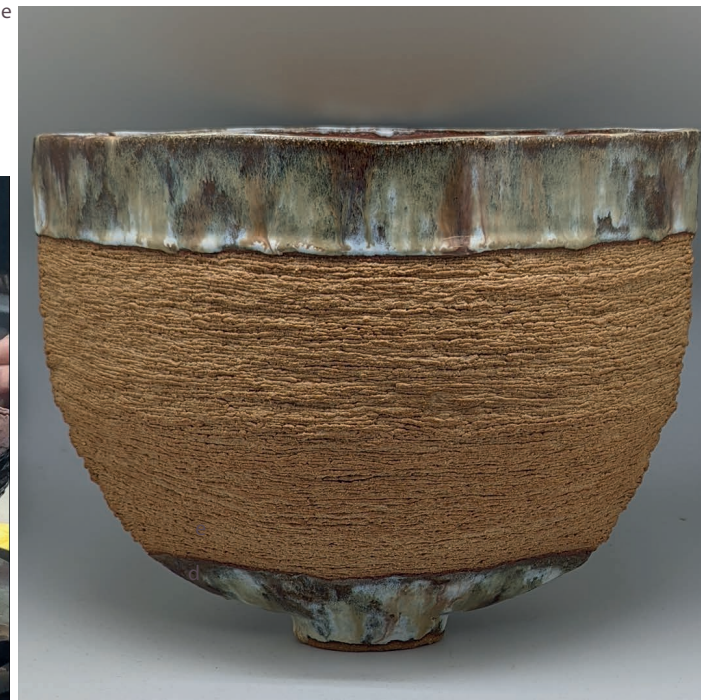
b



d



e



Between meditation, archaeo-poetic intuition, technical exercise, and contemporary plastic research, this collection reinterprets the ancient technique of coiling.

Each unique piece is an assembly of hundreds of small clay coils hand-rolled. They are then patiently stacked layer by layer in successive strata, building up the vessel walls and defining its curve.

This repeated gesture, the accumulation of a multitude of parts that might seem insignificant, creates the form and texture of each piece. The coiled, matte, and monochrome sections meet the smooth, glossy surfaces adorned with handmade ash glazes.

a - STRATES-MC8
Stoneware, high-temperature firing,
handmade ash glazes.
H. 33.5 cm - max diam. 26 cm - neck
diam. 6.5 cm - foot diam. 13 cm -
weight 3.5 kg.

a

b - STRATES-MC4
Stoneware, high-temperature firing,
handmade ash glazes.
H. 30 cm - max diam. 20.5 cm - neck
diam. 9.5 cm - weight 1.7 kg.

c - STRATES-MC5 - detail
Stoneware, high-temperature firing,
handmade ash glazes.
H. 36.5 cm - max diam. 30 cm - neck
diam. 13 cm - foot diam. 10 cm -
weight 6.2 kg.

d - Each coil is delicately pressed onto
the previous one in a long spiral. Once
the wall has risen about one
centimeter, the interior is smoothed to
ensure the piece's cohesion and receive
the following strata.

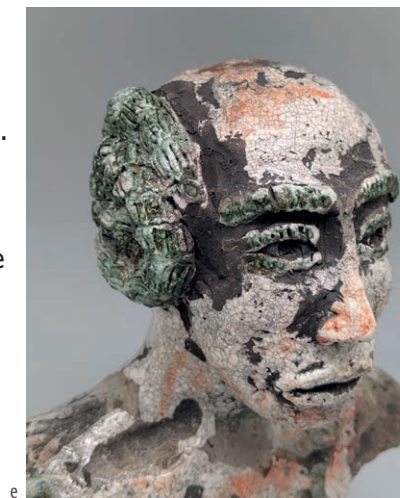
e - STRATES-MC7
Stoneware, high-temperature firing,
handmade ash glazes.
H. 25 cm - neck 35.5x22 cm - foot 8.5 x
5.5 cm - weight 1.8 kg.

Collection Mythes

Collection *Mythes*

Mythe, noun (masculine)

— Fabulous narrative, often of popular origin, featuring beings (gods, demigods, heroes, animals, natural forces) symbolizing energies, powers, aspects of the human condition.



The sculptures in the Mythes collection seem to carry a story, an ancient narrative.

Ancestral figures, archetypes, or objects: they embody a personal mythology, a heritage, facts that interweave through the centuries.

The shades of gray brought by raku smoke-firing, the crackles in the surfaces colored with handmade slips draw the character of each piece.

a - MYT-T3 - LE FRÈRE
Glazed stoneware, smoke-fired, with light reduction.
H. 23.5 cm - W. 22 cm - D. 17 cm - foot diam. 13 cm - weight 2.5 kg.

b - MYT-T1 - PETITE FEMME
Glazed stoneware.
H. 21 cm - W. 15.5 cm - D. 16.5 cm - weight 2.3 kg.
c - Various small heads - stoneware, handmade fine slips, glaze.

d - MYT-T - LE DERNIER
Smoked stoneware, terra sigillata, glaze.
H. 33 cm - max W. 25 cm - D. 19.5 cm - weight 4.7 kg.

e - MYT-T11 - DAME D'ELX - detail.
Smoked stoneware, handmade slips, glaze.
H. with base 29 cm - max W. 18.5 cm - D. 11.5 cm - weight 1.8 kg.

f - MYT - MOINE
Smoke-fired clay, glaze.
H. 19 cm - W. 14 cm - D. 17 cm - weight 2.1 kg.

Collection *Bleus*



a

Collection *Bleus*

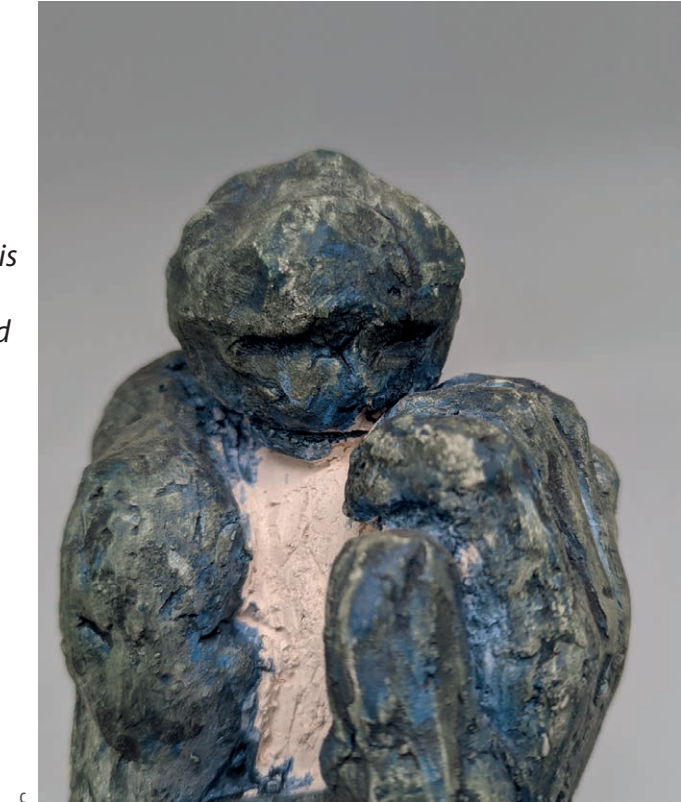
Bleu, adjective / noun (masculine)

— Color of minerals such as azurite, chalcedony, cobalt, lapis lazuli, turquoise, malachite...

— In alchemy: phase of transformation between matter and spirit.



b



c

This collection shapes bodies sculpted directly into stoneware, without adding material.

The work is akin to direct carving, as in stone: revealing rather than constructing.

Blue, applied in successive layers of slips or oxides, is worked before and after the first firing, without glaze.

These sculptures invoke an emerging humanity. The sculpted bodies seem to surge from the mass of white stoneware. The rough surfaces, hollows, and planes are then revealed or softened with oxide washes; depending on the figures, they become matte, satin, or polished.

a - BLEUS-BL1 - HOMME
Stoneware, oxides.
H. 15 cm - W. 10 cm - D. 10 cm - weight
1.1 kg.

b - BLEUS-BL2 - COUPLE
Stoneware, oxides.
H. 18 cm - W. 12 cm - D. 12 cm - weight
1.3 kg.

c - BLEUS-BL3 - GÉANT
Stoneware, oxides.
H. 26 cm - W. 12,5cm - D. 12,3cm -
weight 2.4 kg.

Collection Sweet Smokes

Collection *Sweet Smokes*

Tressailage, noun (masculine)

— Fine crackles in the glaze layer of a ceramic piece, allowing smoke to penetrate the clay body during raku firing.

This collection brings together bowls, vases, and vessels in grogged stoneware, shaped then smoke-fired using modern Western techniques derived from traditional raku.

The crackled glaze captures carbon on the surface; the matte areas remain gray or black, saturated by the smoke.

I play with contrasts of texture, shine, and depth — the smoke reveals the imprint of fire.



b



g



c



d



e



f

a - SWSM-GCT10 - GRANDE COUPE TRIPODE - détail.
Smoked stoneware, handmade fine slips, oxides, glaze.
H. 13cm - max diam. 32 cm - weight 1,4 Kg.

b - SWSM-PCT10 - PETITE COUPE TRIPODE
Smoked stoneware, handmade fine slips, oxides, glaze.
H. 12 cm - max diam. 21 cm - weight 0,9 Kg.

c, d, e, f, - diverses PETITES COUPES COQUE
Smoked stoneware, handmade fine slips, oxides, glaze.
Diam. 16/18 cm - weight 320/350g.

g - SWSM-CD24 - COUPE
Smoked stoneware, handmade fine slips, oxides, glaze.



News

Musée d'Art Moderne de Céret, France
Work selected by the museum team to be featured at the museum art shop.

Ateliers d'Art de France National Competition 2025
Regional exhibition from April 31 to May 19 at Ébénistes & Créateurs – Revel 31250.
My work on one of the vases from the Strates collection was recognized and selected among proposals from craftspeople across Occitanie. The regional final was held on April 10.

An article on the Strates collection will appear in the upcoming Carnet des Innovations dedicated to ceramics. These notebooks aim to highlight pioneering approaches in the field of art crafts and are published by the association Histoires d'Artisans.

The projects selected for this ceramics issue demonstrate the capacity of French artisans to explore, invent, and question materials with rigor.



News

"Esprits simples" Exhibition – April 2024, Céret 66400
Visit by Minister of Culture Ms. Rachida Dati during the ceramic-painting duo exhibition with Annick Llory.



Registration of the TERR'ANDSIA model and trademark.
Ceramic support for epiphytic plants, to hang or place.



Ceramic installation NUAGE & art performance .
Exhibition with Béatrice Deballé. La Capelleta Avril 2024, Céret 66400.



Contacts & Infos pratiques

Sophie Jolivet Céramiques



+33 06 18 36 35 76



contact@sophiejolivet-art.com



www.sophiejolivet-art.com



@sophiejolivetceramiste



Sophie Jolivet Céramiques



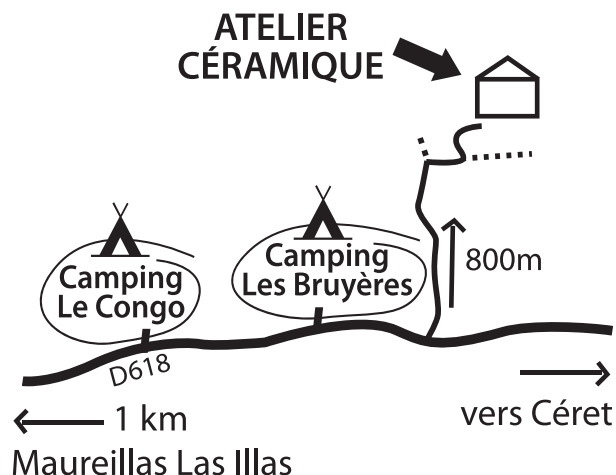
@sophiejolivet7704



<https://sophie-jolivet.blogspot.com/>



Workshop & tour : Mas Bacane, 66480 Maureillas Las Illas
You are welcome to visit us at any time or by appointment.



Dossier de presse 11/2025

Conception graphique, photographie objets : Sophie Jolivet.

Photos de Sophie : Jean-Luc Kubiak, Delphine Roch, Jean-Claude Liehn